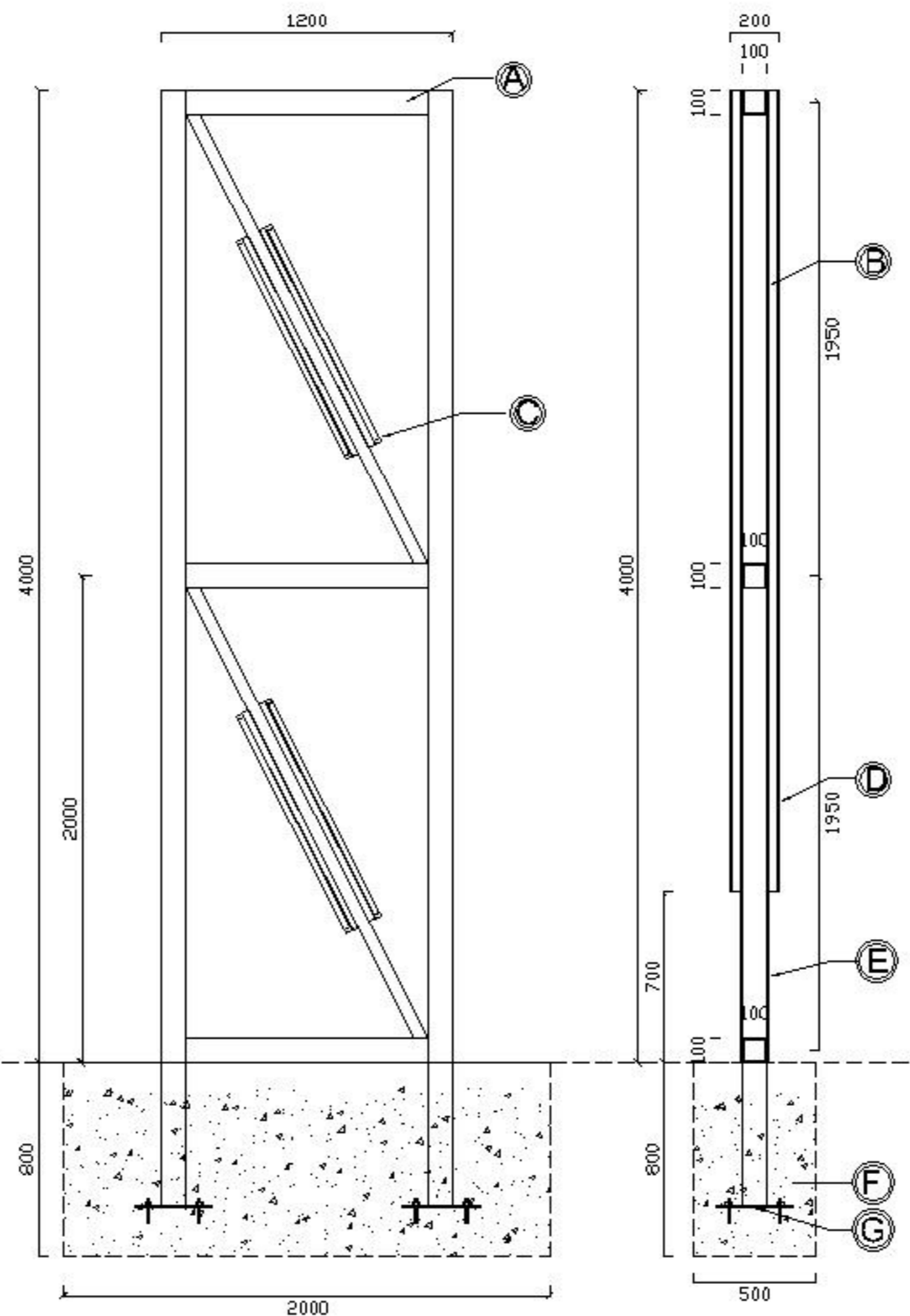


**SIDE ELEVATION**

**FRONT ELEVATION  
- College**



**FRONT ELEVATION  
-M.S. Main frame**

**SECTION**

**STRUCTURE DETAIL :**

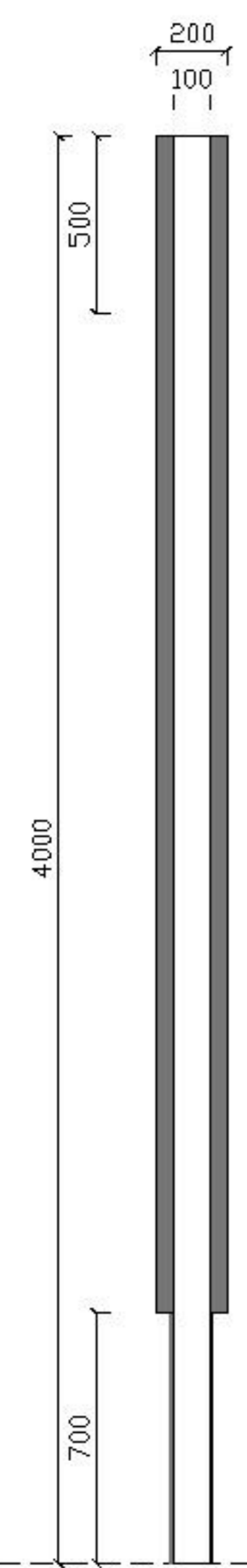
- A - 4000mm x 1200mm x 100mm thk. M.s. hollow main frame
- B - 10mm thk. Inject colour acrylic panel
- C - Fluorescent light
- D - 5mm thk. Grey colour inject acrylic main panel
- E - 0.48mm thk. powder coated (grey) alum. base panel
- F - 2000mm (L) x 500mm (W) x 800mm depth conc. footing
- G - 4mm thk. steel plate to be welded with main frame & buried into conc. footing

**COLOUR SCHEME :**

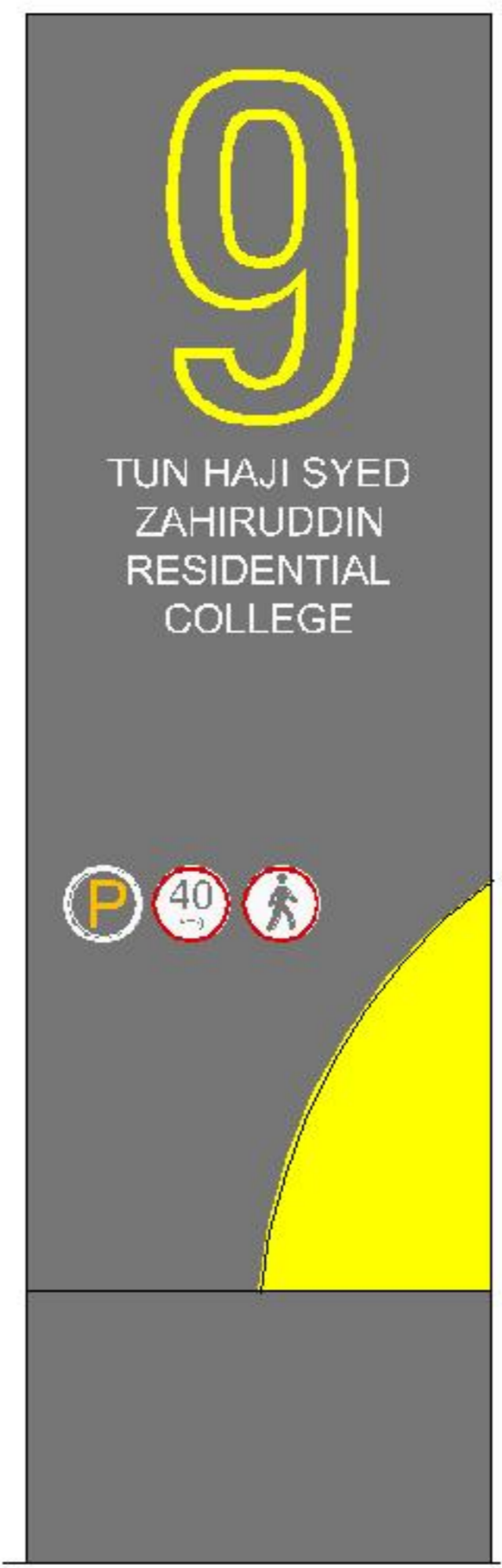
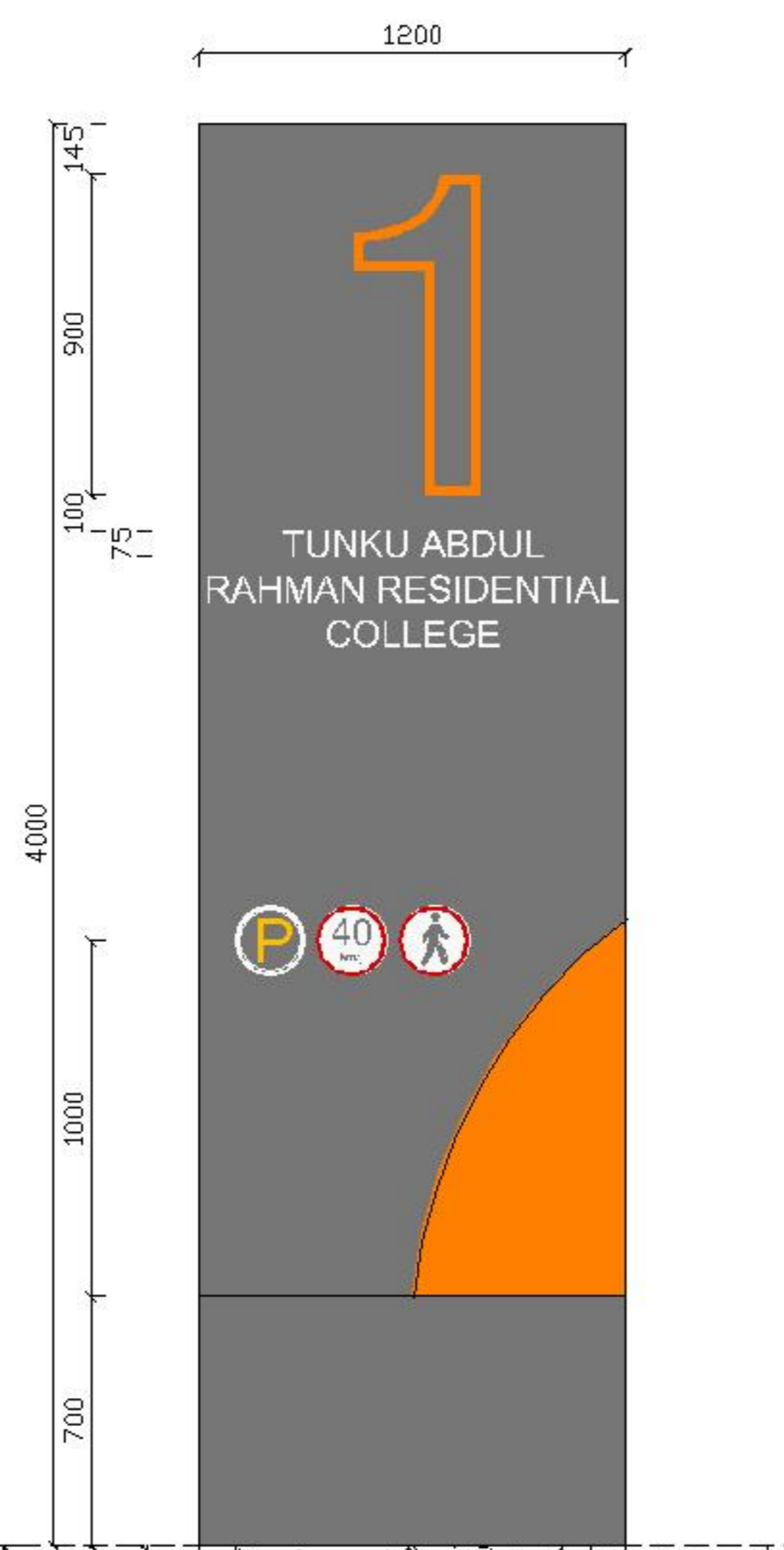
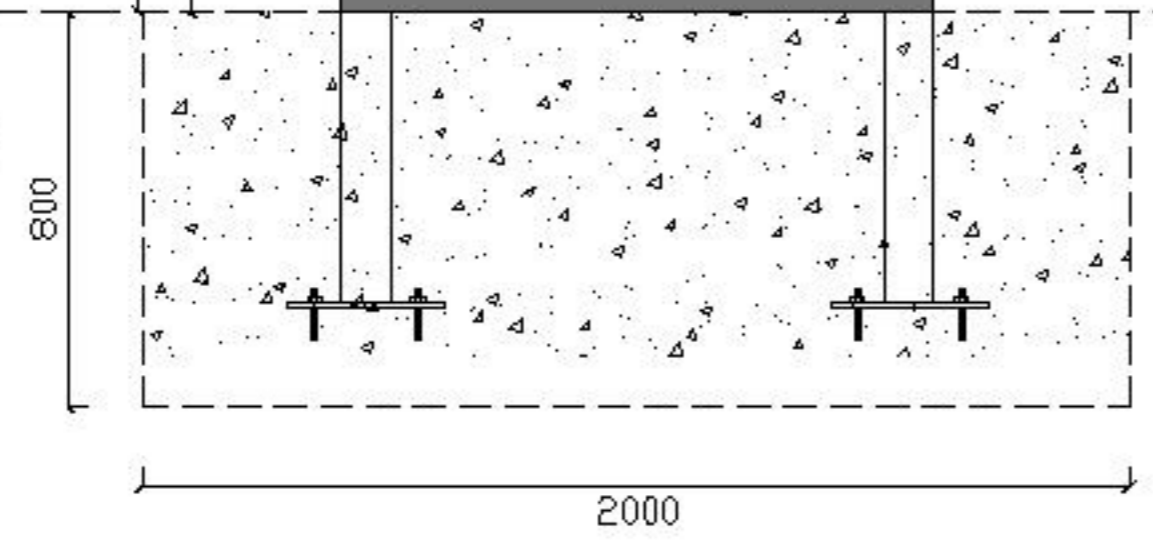
- WHITE - 255
- GREY - 251
- RED - 12
- ORANGE - 30
- BLUE - 160
- GREEN - 102

GL

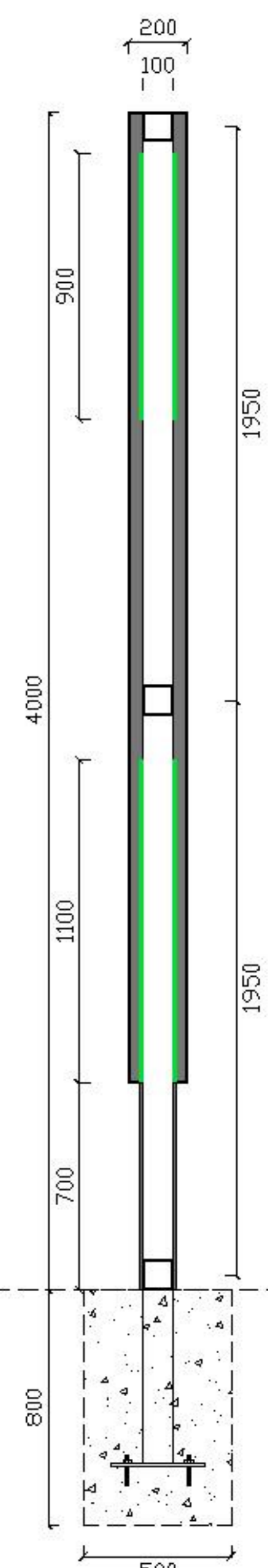
**SIDE ELEVATION**

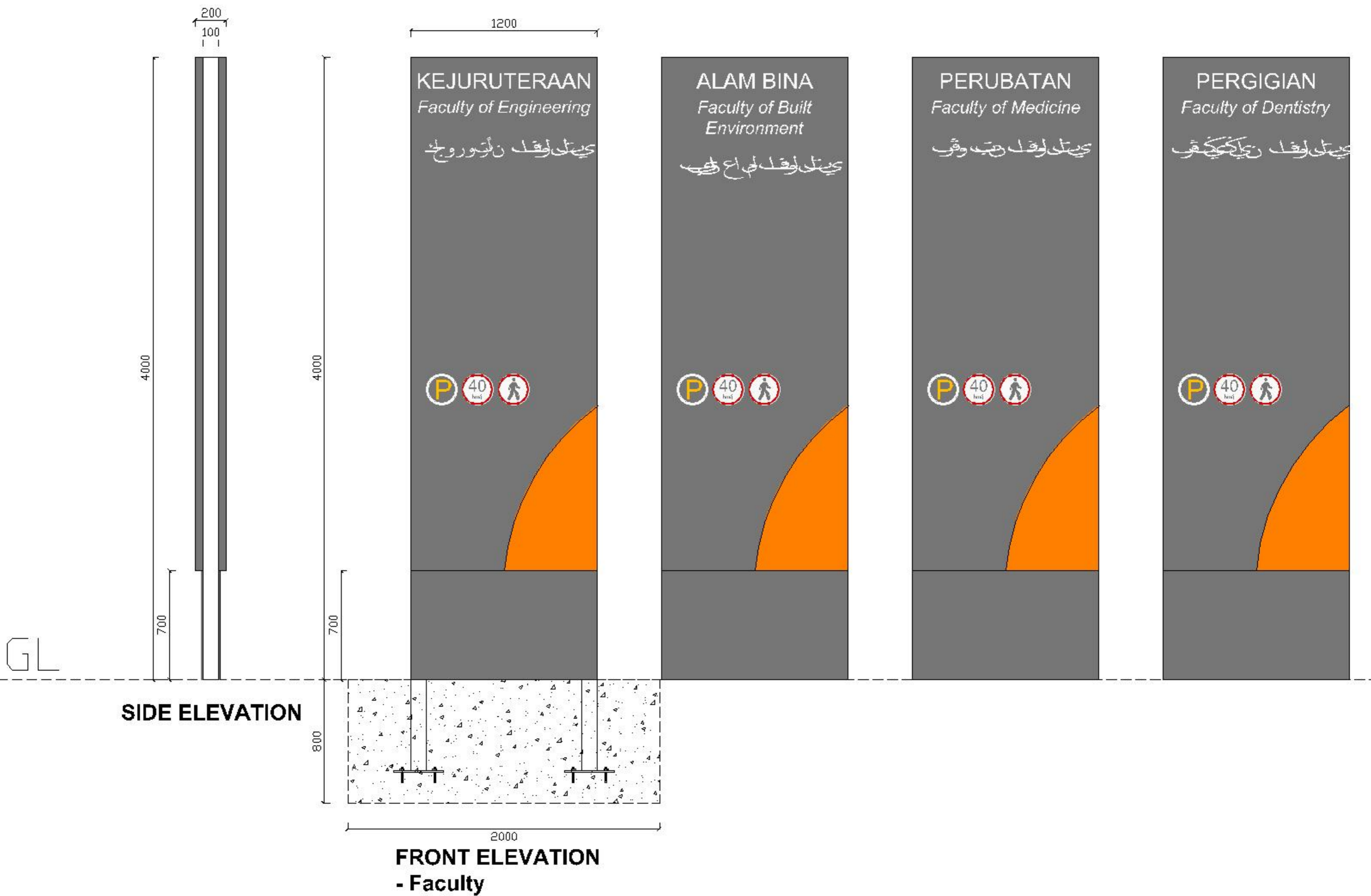


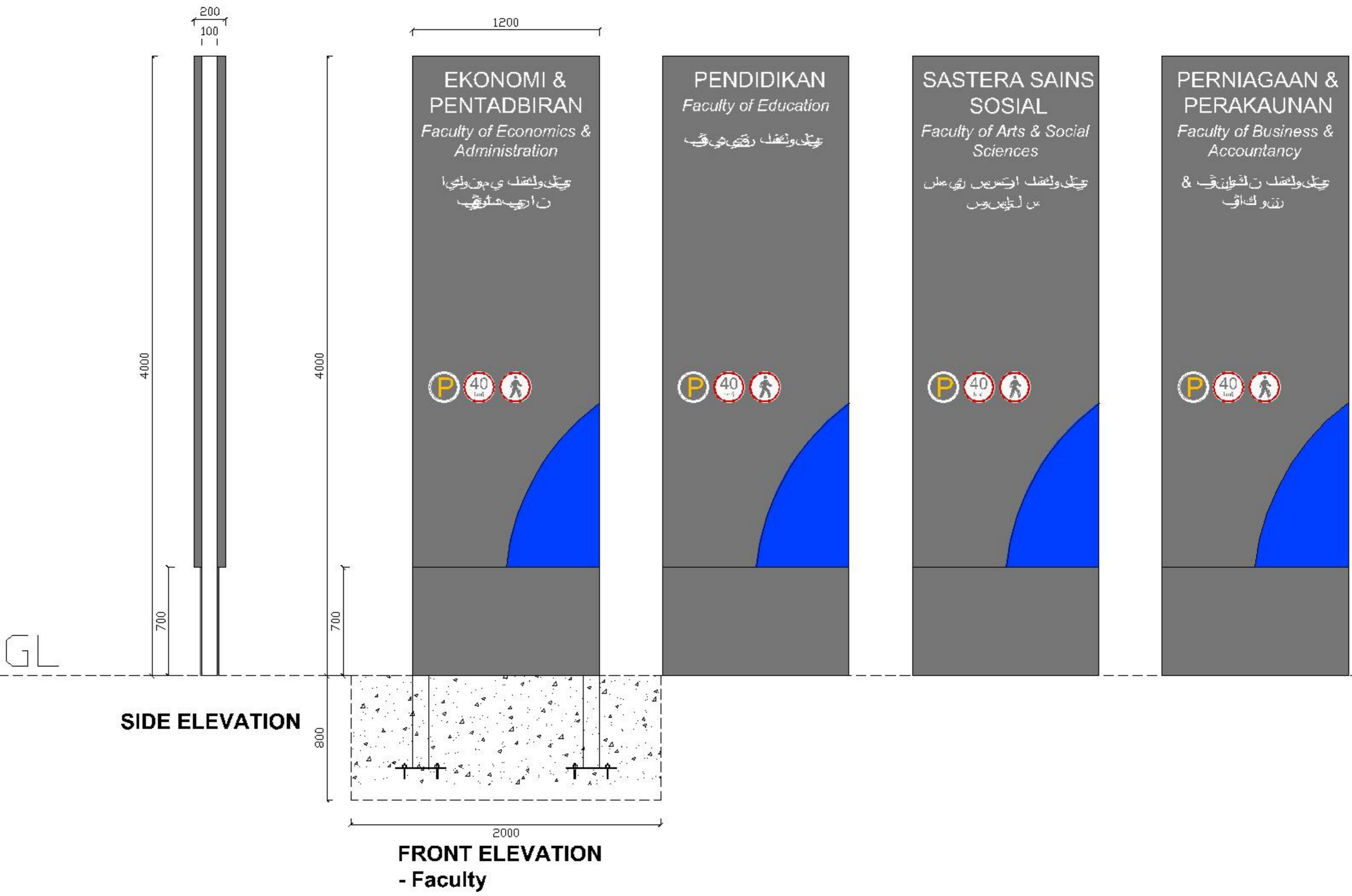
**FRONT ELEVATION  
- College**

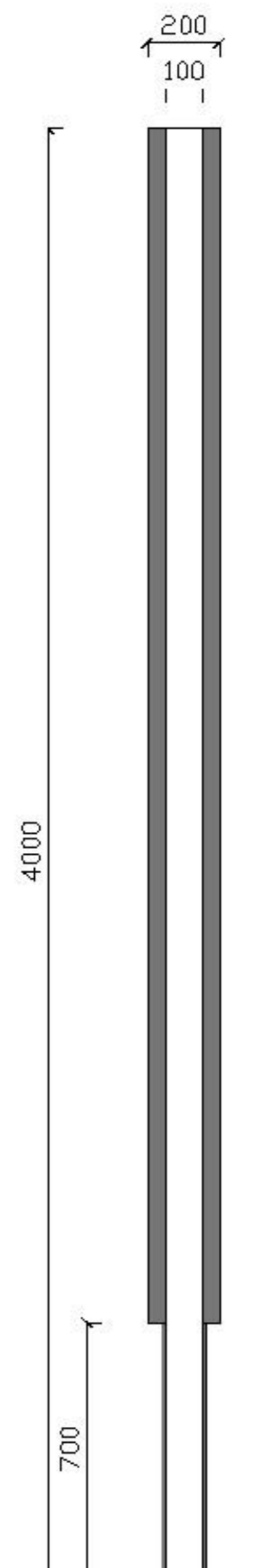


**SECTION**

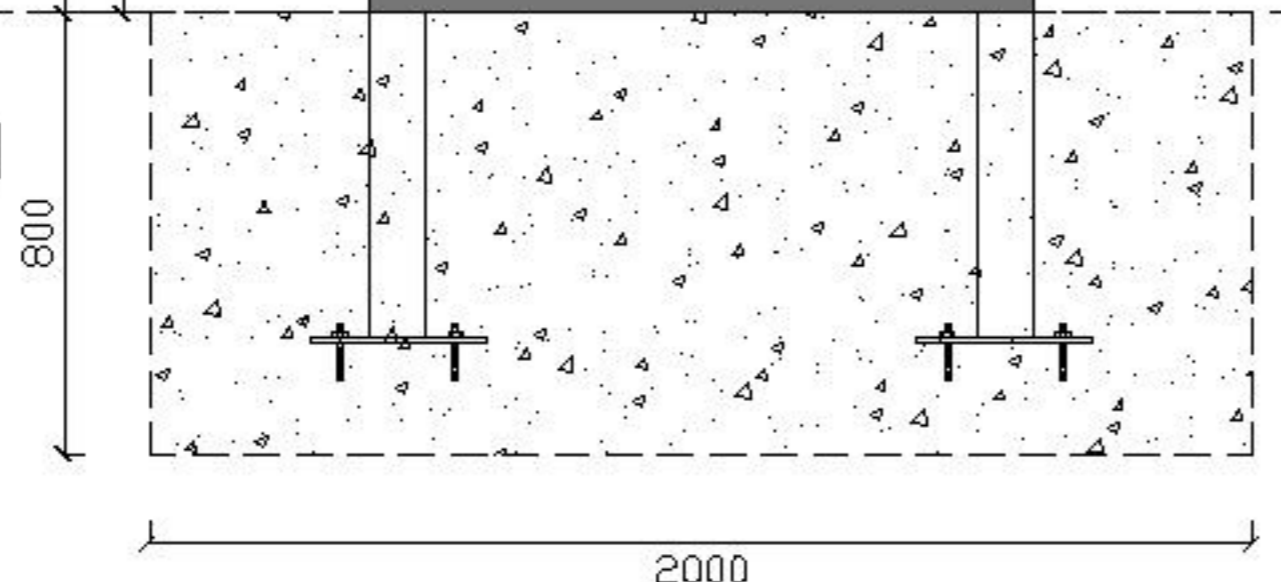








**SIDE ELEVATION**



**FRONT ELEVATION  
- Faculty**

